



INDOOR EXHIBIT GUIDE GRADES K-2 ELEMENTARY LEVEL QUESTIONS

Teachers!

The questions in this exhibit guide coordinate with our living exhibits.
Feel free to make copies as needed.



VIRGINIA'S COASTAL PLAIN GALLERY

How many eggs can a male sea horse hold in his pouch? _____

CYPRESS SWAMP [Hint- most animals are seen on the lower level]

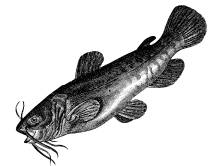
Mark an "S" for the birds that have feet for swimming:



___ Woodpecker ___ Merganser ___ Quail ___ Killdeer ___ Teal

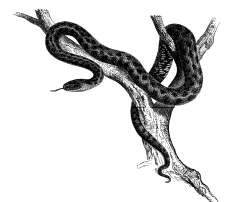
ALL plants and animals must do FOUR things to survive:
Get Food, Find Shelter, Defend itself, and Reproduce.

Match the phrase to the animal that:
smells with its tongue



protects itself with a hard shell

takes care of its babies



lays eggs in water



VIRGINIA'S PIEDMONT AND MOUNTAINS GALLERY

The Appalachians have more of what kind of animal than any other region in the world? (Circle your answer):



Mammals



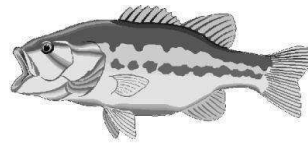
Salamanders



Frogs



Birds



Fish

APPALACHIAN MOUNTAIN COVE [Hint-most animals can be seen on the lower level]

Circle the animals which have scales as a body covering:

Trout

Hellbender

Rattlesnake

Bird

VIRGINIA'S WORLD OF DARKNESS GALLERY

Circle the senses owls use to find food in the dark:

Taste

Sight

Smell

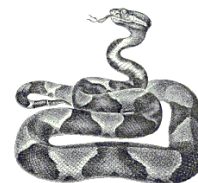
Hearing



Match the nocturnal animal with its adaptation



Large eyes



Sticky toe pads



Sonar

Heat sensing pits



VIRGINIA'S UNDERGROUND GALLERY

Frogs survive better in Grafton Ponds because there are no _____ in the ponds.

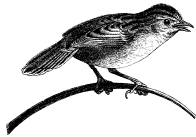


**OUTDOOR HABITATS EXHIBIT GUIDE
GRADES K-2 ELEMENTARY LEVEL QUESTIONS**

BEAVER Beavers can hold their breath for up to 15 minutes.
Try holding YOUR breath for ONE minute!



OTTER Circle the otter's food:



COASTAL PLAIN AVIARY

Match the parts of a heron's body with how each helps it survive:



WIDE TOES

To wade in water

LONG LEGS

To stab fish

SHARP BEAK

To reach underwater

LONG NECK

To keep from sinking in mud

BALD EAGLE

Draw a line from the eagle to the parts of its body used to catch food:

FEATHERS

SHARP HEARING

KEEN EYESIGHT



SHARP CLAWS (TALONS)

FOX

Which fox is harder to see in its exhibit? (Circle one)

RED FOX



GRAY FOX

COYOTE

Circle the adaptations that helped coyotes expand to the eastern United States:

being furry

intelligence

hunting skills

speed

howling

WHITE-TAILED DEER

Feel the deer footprints on the sign. Deer feet are called...(Circle one)

PAWS

HOOVES

TOES

HANDS



TURKEY



Can turkeys fly? _____ Yes _____ No

Where do they sleep? _____

BOBCAT

Feel the bobcat footprint on the sign. Do you see claw marks? (check one)

_____ Yes _____ No.

Why? (Check The Correct Box):

Bobcats have no claws

Bobcat claws stick straight up

Bobcat claws fold up into pockets on the foot

